



**Some of our current initiatives
aimed at supporting the health of**

**MULTICULTURAL
COMMUNITIES**

How you can help?

Outline

- Monash Health – overview and context
- South East Public Health Unit
 - Overview
 - Noticeboard
 - Website
 - Catchment Plan 2023-2028
 - Public Health Strategy 2024-2029
- Community Hospitals
- Casey Early Parenting Centre
- Multicultural Strategy
- Engaging the Engagement Team



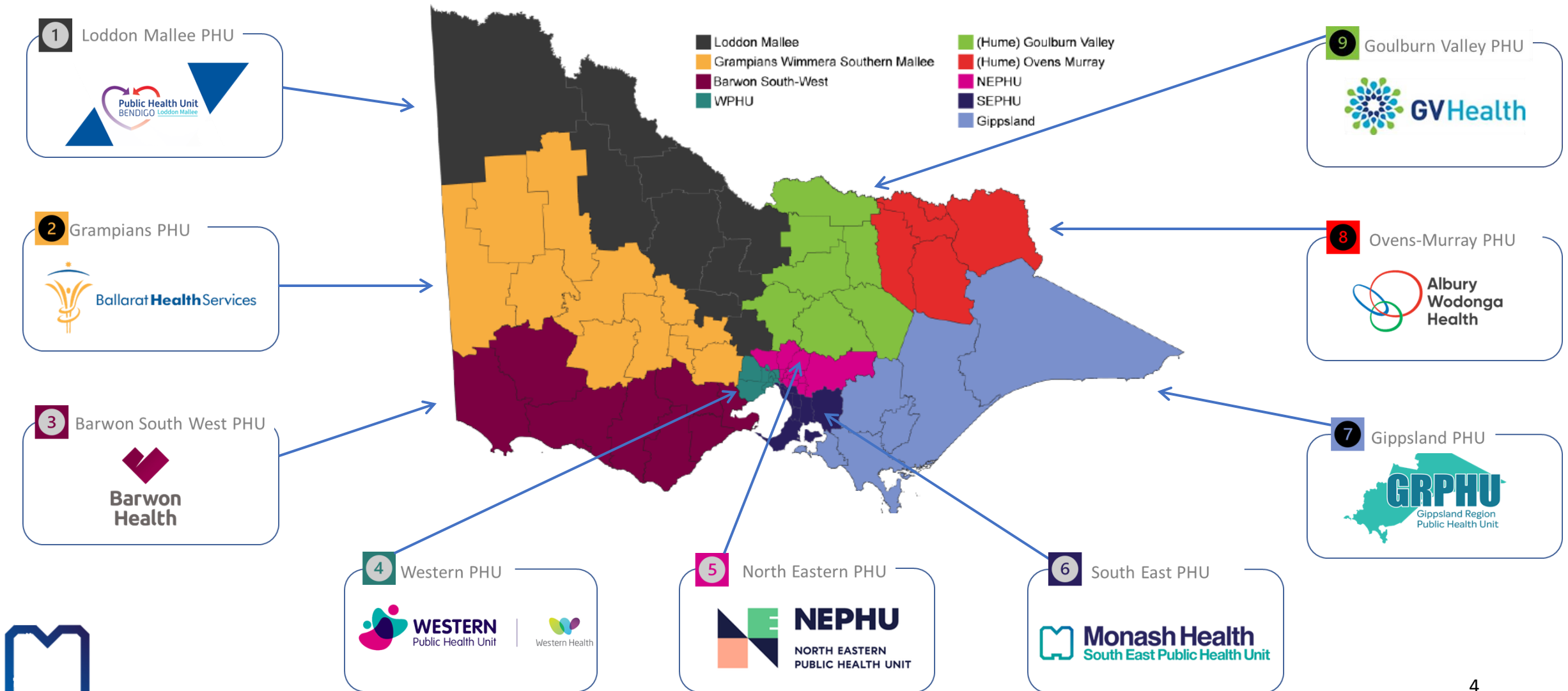
Our Context:

- Monash Health is the largest healthcare provider in Victoria, serving one-quarter of Melbourne's population.
- 40+ locations including 7 hospitals plus community outreach services
- 41% of patients born overseas, speaking over 160 different languages.
- Encompasses Melbourne's most socio-economically disadvantaged municipality.
- Monash Health employs 25,000 staff from 140 different cultural backgrounds.



Who is SEPHU?

One of nine Victorian Local Public Health Units (LPHUs)



Who is SEPHU?

The Victorian Department of Health have established nine Local Public Health Units (LPHUs) across the State to enable local health services, councils, agencies and community organisations partner together to keep their communities healthy, safe and well.

- LPHUs were **established in 2020** during the COVID-19 pandemic to manage local cases and outbreaks of COVID-19.
- LPHUs since June 2022 have begun undertaking additional public health responsibilities for other notifiable conditions.
- LPHUs build on their local knowledge and relationships to enable a local response to health issues and incidents.
- LPHUs are still relatively new and evolving, developing infrastructure, partnerships, processes, and plans.
- LPHUs recognise there is great work being done already in their regions and are keen to support or complement these initiatives wherever possible.

More info: www.health.vic.gov.au/local-public-health-units

South East Public Health Unit (SEPHU)

- 11 LGAs
- 1.8 million people
- Lead agency Monash Health



SEPHU Community Noticeboard

Sign up to our fortnightly newsletter to receive the latest:

- health information on topical issues
- health alerts impacting the region
- links to translated resources
- events, campaigns
- opportunities for funding and collaboration

CLICK ON THE QR CODES OR SCAN



SIGN UP HERE



LATEST EDITION



Hi colleague, here is what you need to know. [No images? Click here](#)

Monash Health
South East Public Health Unit


Community Noticeboard

Keeping you and your community informed

In this 18 October issue:

- [How to prepare for the extreme heat predicted this summer](#)
- [Help for people prone to asthma or hay fever](#)
- [Need extra help to get a COVID-19 vaccination?](#)
- [Shingles vaccine free for more people from November 1](#)
- [Getting the right care at the right time](#)
- [Physical activity can improve your mental health](#)
- [Shaping our public health priorities and strategy together](#)

Health Protection



PREPARE FOR A HEATWAVE

How to prepare for the extreme heat predicted this summer

It may feel strange talking about heatwaves when the weather has been so mild. But Australians are being warned that heat waves can be expected this spring and summer. Now is a good time to get prepared and have a plan.

SEPHU website

www.sephu.org

2022 COVID booster now available - [Learn more >](#)

MonashHealth.org

Monash Health
South East Public Health Unit

Search

[Home](#) [About SEPHU](#) [COVID-19](#) [Mpox \(Monkeypox\)](#) [Buruli ulcer](#) [Health promotion](#) [Research](#) [News](#) [Contact](#)

Get vaccinated against COVID-19 and Mpox (Monkeypox)

[Learn about COVID-19 vaccination >](#)

[Learn about Mpox vaccination >](#)

Monash Health's South East Public Health Unit is working together with the communities we serve to prevent and respond to public health issues.

COVID-19 >

- > Latest information
- > Where to get RATs
- > Vaccination

Mpox >

- > Latest information
- > Vaccination locations
- > FAQs

Buruli ulcer >

- > What is Buruli ulcer?
- > Latest information
- > What to do if you think you have a Buruli ulcer



SEPHU's Population Health Catchment Plan 2023-2028

Four priorities have been identified:

1. Reducing vaping (e-cigarette) and tobacco use and related harms
2. Preventing hospital admission due to falls
3. Promoting active lifestyles
4. Enhancing cervical cancer screening and human papillomavirus (HPV) vaccination rates

Download from sephu.org or click on this [link](#) or scan the QR code



SEPHU's Public Health Strategy 2024-2029

- **SEPHU's Public Health Strategy 2024-2029** is on the drawing board, and we want to understand how best we can work together to deliver improved health outcomes for our communities.
- Many thanks to those who participated in our recent consultations. The discussions have been very valuable so far.
- **If you would like to add more, or contribute for the first time, it's not too late!**
- Complete the **survey** by clicking on the link [here](#) or scanning the QR Code



Monash Health
South East Public Health Unit

 Have your say on SEPHU's 5-year Public Health Strategy

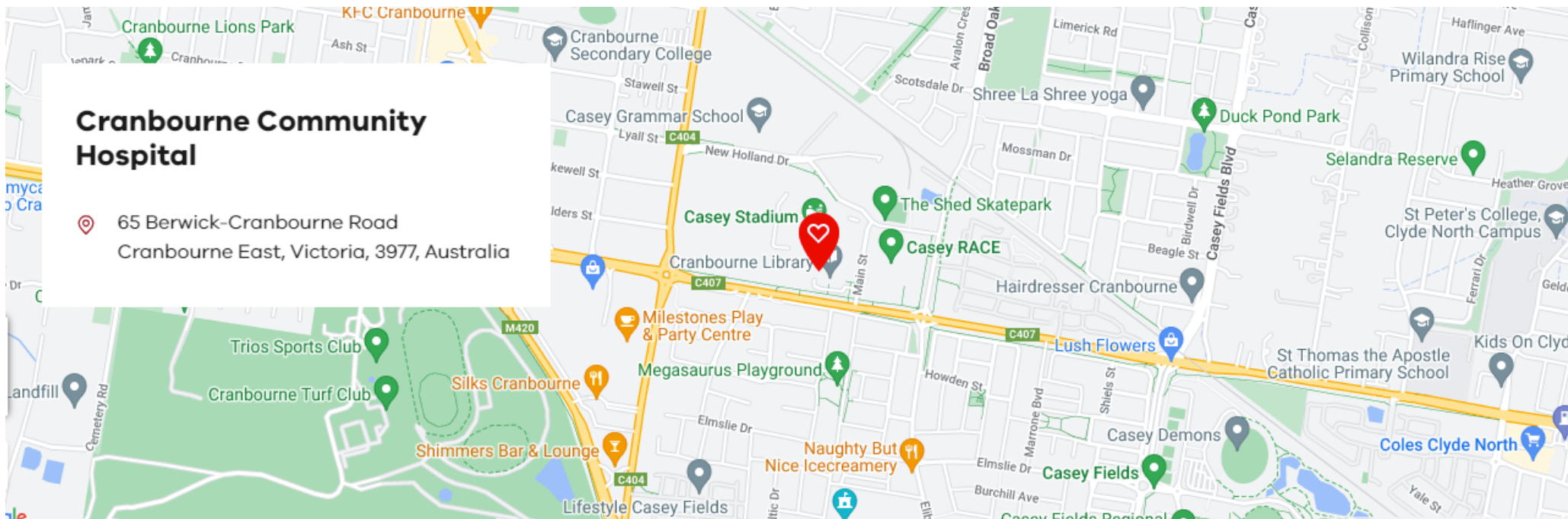
The image shows two women sitting on a wooden bench, looking at a laptop. The woman on the left is wearing a black sleeveless top and brown pants, while the woman on the right is wearing a light blue turtleneck and white pants. They appear to be in a collaborative discussion. Below the photo is a teal banner with the Monash Health logo and text, and a white banner at the bottom with a smaller logo and text.

Community Hospitals update

Community Hospitals will help take pressure off nearby major hospitals, including Casey Hospital, and enable more people to manage their health needs closer to home.

Cranbourne

- Building is currently underway, completion late 2024, opening early 2025
- Provide a range of services including day surgery, mental health, urgent care, specialist appointments and public dental.







Artist impression

Casey Early Parenting Centre



What is an **E**arly **P**arenting **C**entre?



What programs do Early Parenting Centres provide?

- Residential parenting support where families stay overnight at the centre over several days.
- Daytime programs and personalised support.
- Group programs
- In-home support
- Telephone support
- Resources in-language

<https://www.youtube.com/watch?v=jiNvFyiJcEg>

How could we make Early Parenting Centres and Community Hospitals more accessible and inclusive to CALD communities?

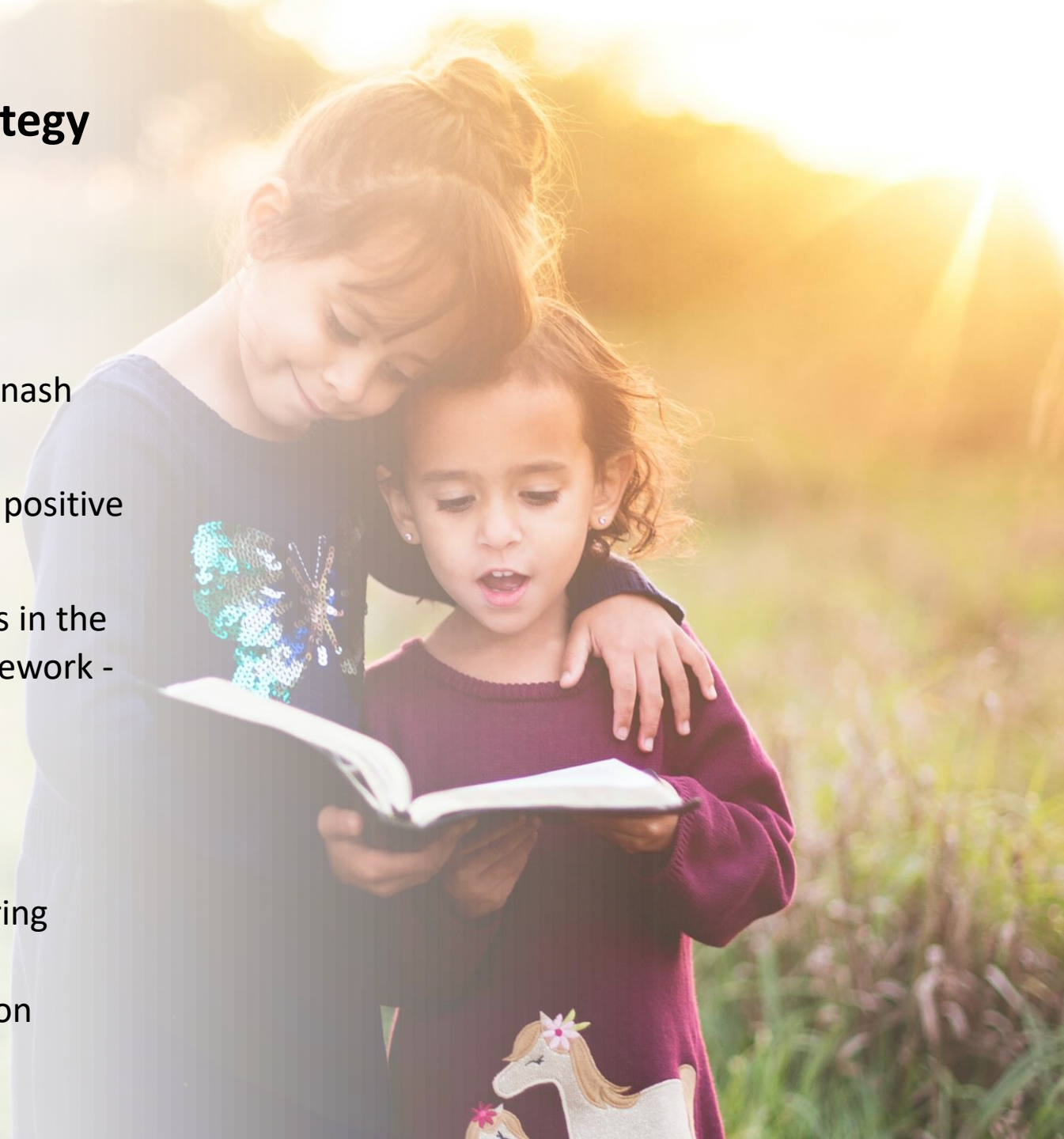


Next task: Developing a Multicultural Strategy for Monash Health

Considering...

- the remarkable cultural diversity found within the Monash Health catchment and workforce
- the data showing a disparity of healthcare access and positive outcomes
- and the requirement to reach and report on standards in the Department of Health's 'Cultural responsiveness framework - Guidelines for Victorian health services'
- and the good work already started

Monash Health will continue to demonstrate its unwavering commitment to cultural diversity by developing and implementing a dedicated strategy with a primary focus on multiculturalism.



Connect with us anytime if:

- You want to inform us of health issues in your community.
- You can arrange a consultation or focus group to help inform our projects.
- You would like to contribute to regional or issue-based strategies or forums.
- You would like us to meet with your team or involve us in your event.
- Email communityengagement@monashhealth.org



Fiona Noble

Rob Koch

Senior Advisors
Community Engagement

